



History Matters!

**Newsletter of the Effingham County Cultural Center
and Museum**

Effingham, Illinois

Volume 6, Issue 2

April - May - June, 2019

Austin Mansion Presentation March 28, 2019



Delaine Donaldson, Jane Ries, and Phil Lewis described the local history of the Illinois College of Photography, including its impact on Effingham's economy, the structures the school inhabited, and the many graduates who went on to practice the art and science of photography on an international scale. Billie Jansen, of Walnut Street Weddings, hosted the event.

ECCCMA MISSION STATEMENT

The purpose of the Museum is to establish, maintain, and operate a museum for the general public, and to collect, research, care for and interpret materials and artifacts of cultural and historical interest to the residents of, and visitors to, Effingham County, Illinois. Our vision is that the 1872 Effingham County Courthouse remains as an architectural gem that instills a sense of community pride and provides a venue to educate and showcase the history, art, and transportation of Effingham County. The Museum is a 501(c) 3 organization. Donations are tax deductible.

Hours

Usual hours March-December: Tuesday & Saturday: 10 AM - 2 PM
Other hours by special arrangement
Closed to the general public January-February, except for special programming
or by appointment

Accessibility

The museum is wheelchair accessible from the east side entrance just off the parking lot. Toilet facilities that are wheelchair accessible can be found in the west exhibit room, Gallery 1.

Collection Building

The scope of the Museum's collection is directed by its Mission Statement. Donations are accepted of objects that relate directly to the Museum's mission of collecting materials and artifacts of cultural and/or historical interest.

Board and Officers

President	Delaine Donaldson	
Vice President	Jane Ries	
Secretary	LoElla Baker	
Treasurer	Allen Westendorf	
Members at Large	Jerry Katz	
	Amy Gillespie	
	Steve Miller	
	Susan Hoelscher	Dr. Henry Poterucha, Emeritus
	Linda Ruholl	Dr. Ruben Boyajian, Emeritus

CONTACT INFORMATION

Street address:	110 East Jefferson Ave., Effingham, IL 62401
Mailing address:	Effingham County Cultural Center and Museum P.O. Box 324 Effingham, IL 62401
Phone:	217-540-8655 (leave message if no answer)
Email:	ECCCMA@gmail.com
Web site:	www.effinghamcountymuseum.org
Visit us on Facebook @:	Effingham County Courthouse Effingham Ill
Newsletter Editor:	Linda Ruholl, contact @: lruholl@wbnnorriselectric.com

5th Annual Celebration of Lincoln and His Times
Lincoln's First Year in Illinois



Presented by
The Honorable Ron Spears
Tuesday,
April 16, 2019
7:00 p.m.

Effingham County Courthouse
Museum
110 E. Jefferson Ave.
Effingham, IL 62401

6:00 p.m. Doors Open
6:30 p.m. Special Music Begins
Lincoln book to be given away

Brought to you by the Effingham County Cultural Center and Museum Association
and Lake Land College

For more information, call the museum at 217-540-8655

Free Event!



LAKE LAND
COLLEGE

New exhibits for 2019 year

The volunteers at the Effingham County Museum devoted the winter months to accessioning new acquisitions, and to revising the exhibit spaces on both levels of the Museum. No matter how often you visit us, there is always something new to see.

First Level



Galleries 1, 2 and 4 honor Effingham County's many veterans.

Fans of military models will enjoy this collection of equipment from the collection of Craig Mosher in Gallery 4.

First Level - Gallery 2



Gallery 2 continues the Museum's focus on local military service.

Civil War buffs will find many things to stimulate their interest in the service of local veterans of the War Between the States.

New exhibits for 2019

First Level - Gallery 3



Clothing from the past is an artifact of the culture of those specific times.

Wilma Woidt Krueger's beautiful lace wedding dress is accompanied by the classic formal studio portraits of the bride, and bride and groom, on their special day.

First Level - Gallery 4

The theme of clothing and fashion accessories as a cultural phenomenon continues in Gallery 4.

Sandra Bushby donated this collection of ladies' hats and associated artifacts.

Hats from the 1940s and 1950s make up the majority of this collection, although the large plum-festooned hat on the second shelf is from an earlier (Edwardian) era.

The top shelf creations date from the 1940s, and complimented the dress styles and coats of that time period.

Hats were comparatively smaller in the 1950s, as hair styles tended to hug the head. Several 1950s hats are displayed on Shelf 3.

Several hat boxes are part of the display. Hat boxes serve a utilitarian storage purpose, but they are also beautiful symbols of an earlier time, in and of themselves.



New Exhibits for 2019

First Level - Gallery 5



The Tower Hotel/Apartments



St. John's Lutheran Church on West Jefferson Avenue

The Train Room (AKA Gallery 5) features models of iconic structures from the past and the present. Jo Thomas is the artisan who creates these historically-accurate models.

Second Level - Commemorating the 70th Anniversary of the St. Anthony's Hospital 1949 Fire



This new exhibit contains mementoes of the historic fire, and includes magazine, newspapers, books, a brick, a rosary, a ring, and many, many photographs of people who were at the fire, or responded to the fire on the night of April 4-5, 1949.

An area of emphasis in Museum's today is "interactivity" - that is, allowing museum visitors to touch and manipulate portions of an exhibit. The St. Anthony's Hospital Fire has three interactive elements, all positioned on top of the exhibit case.



The first is an up-to-date copy of the National Fire Protection Association's LIFE SAFETY CODE. This code was written and periodically updated as a direct result of the St. Anthony's fire and other similar "large loss fires" in the United States. An entire chapter is devoted to fire safety in hospitals, and includes a mention of fire extinguishers, elevators, stairs, and other means of entrance and exit.

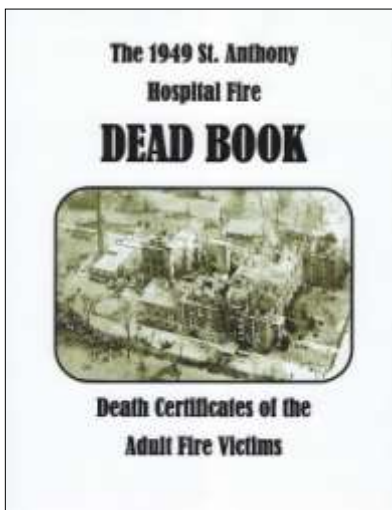
Portions of other chapters address fire safety from other perspectives, including special areas such as surgery and emergency room, where therapeutic gases are used and stored. Visitors are encouraged to examine the book, in order to gain an understanding of what the term "Life Safety Code" actually means.



The second interactive element is an examination copy of FIREMEN. It contains an article about the fire, but the most informative part of the document is the cover. Of the four fire fighter journals to publish analyses of the fire, FIREMEN is only one to put an aerial view on the cover.

This photograph clarifies the position of the various elements of the burned out structure relative to St. Anthony Avenue, which can be seen in the lower left hand corner.

The relationship between the hospital building and the Sisters' convent is also clear. This structure served as the temporary emergency hospital into 1954. It is in the lower right hand corner.

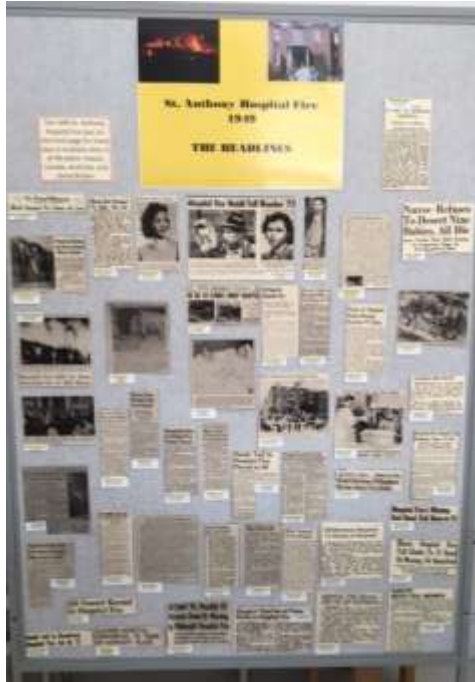


The third part of the interactive section of the exhibit is the Fire Dead Book. This volume contains 51 non-certified copies of death certificates; they represent all of the adult hospital fire deaths investigated by Dr. Taphorn, Effingham's Coroner in 1949.

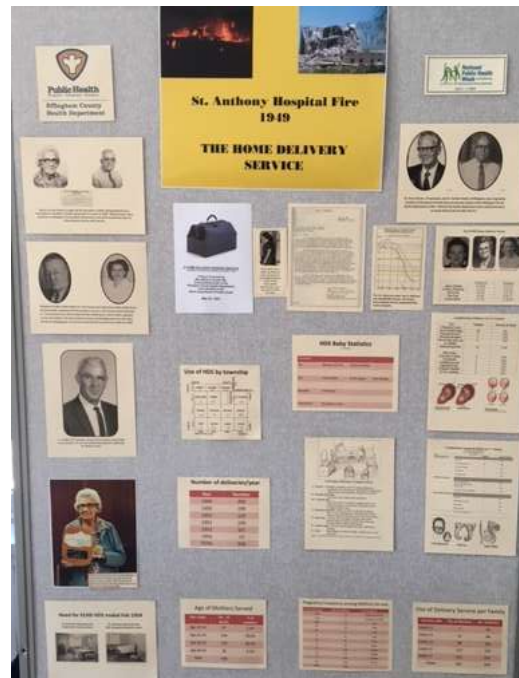
In order to be included, the fire death victim had to be an adult over 18, had to have died in Effingham County in the fire, or soon thereafter, and the death had to be declared accidental by the coroner. In addition, the body had to be claimed by the family; three adult bodies were not claimed.

Members of the public are free to examine the individual copies of these death certificates.

In addition to the exhibit, the Museum is offering four posters about the fire. These posters are very large and are situated on free-standing pedestals to encourage viewing.



Poster 1 contains hospital fire headlines from all over the world. **Poster 2** features Louis DesPres' colored photographs, as well as other pictures from the early days of the fire.



Poster 3 contains pictures and articles about the drive to collect funds for the new hospital, and the events associated with its opening. **Poster 4** covers the Effingham County Health Department's Home Delivery Service, which functioned from April, 1949 to February 1954.

Fire Lectures

All start at 7:00 PM

Second Floor Event Center ~ the Effingham County Museum

Seating is first come, first served



April 4, 2019

The Story of the Fire Deaths and "Ripple Effect"

Speaker: Linda Ruholl

April 11, 2019

The Story of the Caledonia

Speaker: Brian Lustig

April 25, 2019

The Evolving Story of Fire Safety

Speaker: Dave Storm

Salute to the Military of the 1950s



Sunday, April 28, 2019

2:00 - 4:00 PM

Effingham County Museum



2:00 - 3:00 PM Tour the Museum

3:00 - 4:00 PM Recognition of Veterans

&

Short Presentation



Doors open 1:30 PM

Light refreshments will be served